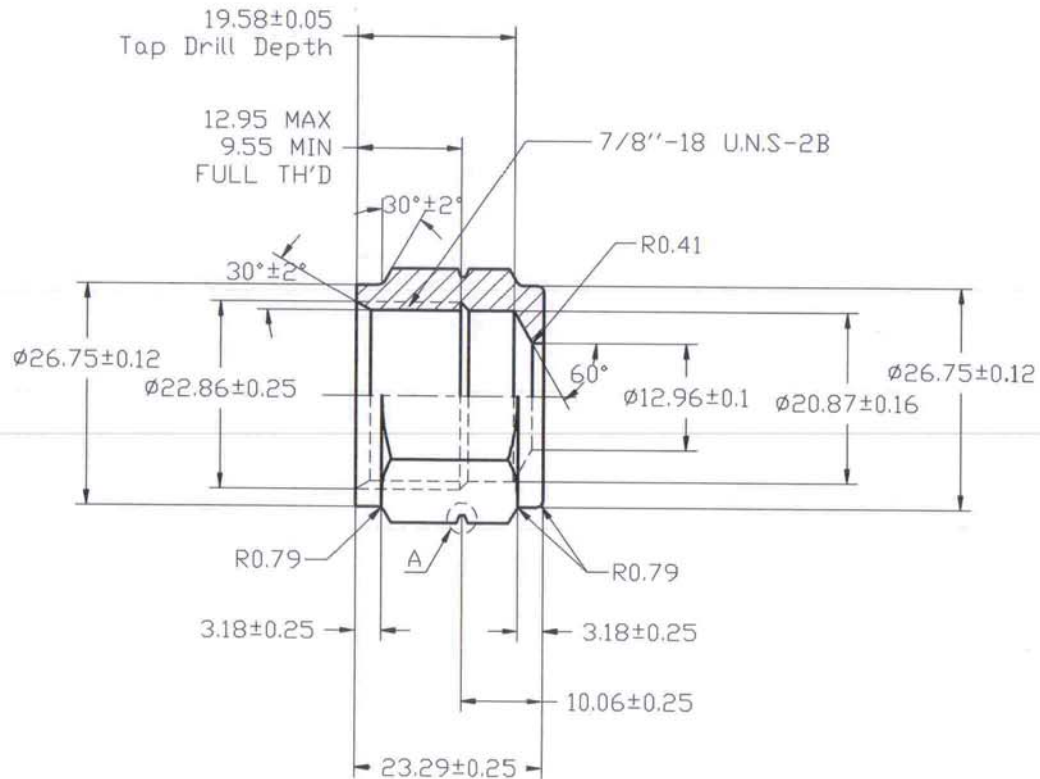
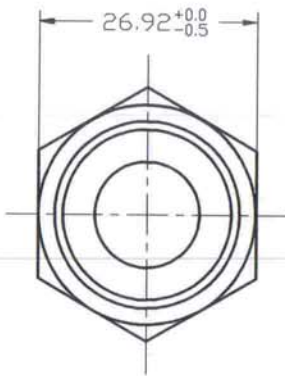
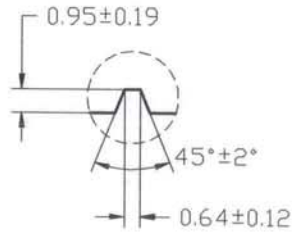


REV 更改号	DATE 日期	REVISION DETAILS 更改内容	APPD 审核并批准

DETAIL A  
SCALE 3:1



UNLESS SPECIFIED  
ALL DIMENSIONS IN mm  
MACHINED SURFACES Ra=3.2um  
ANGLE TOLERANCES ±1°  
Other tolerance exept angles,  
in accordance with  
GB/T1804-2000(ISO2768-1)-m  
and GB/T1184-1996(ISO2768-2)-m

其它事项,  
图示尺寸单位为mm  
未注机加工表面粗糙度Ra=3.2um  
角度公差±1°  
其它未注公差(除角度外)均按:  
GB/T1804-2000(ISO2768-1)-m和  
GB/T1184-1996(ISO2768-2)-m

PART No 零件名		MS350-8	
SCALE:	APPD: 批准 Zhangjian	DRN: 制图 Tangheiling	2016.01.21
NTS	DATE: 日期 2016/1/16	CHK: 审核 Lijunbiao	2016.01.21

MATERIAL Chinese steel 45

FINISH

Remove all sharp edges,burns,slivers and swarf, break all edges 0.127-0.254mm. 去除所有毛刺, 铁屑等残留物, 锐边倒钝0.127-0.254mm.  
ZINC PLATING WITH 12um MICRONS MINIMUM PLATING THICKNESS AND TRIVALENT CHROMATE PASSIVATION AND WITHSTAND 96 HRS TO WHITE / 144 HS TO RED  
RUST IN SALT SPRAY TEST. 镀锌, 三价铬钝化, 银白色, 盐雾试验96小时无白斑, 144小时无红锈, 镀锌层厚度大于12um.